

xiaomi Smart Standing Fan 2 Pro User Manual



WARNINGS

Improper use may lead to electric shocks, fire, personal injury, or other damage.

- ⊗ This appliance can be used by children aged from 8 years and above and persons with reduced physical, sensory or mental capabilities or lack of experience and knowledge if they have been given supervision or instruction concerning use of the appliance in a safe way and understand the hazards involved. Children shall not play with the appliance. Cleaning and user maintenance shall not be made by children without supervision.
- ⊗ This appliance is not intended for use by persons (including children) with reduced physical, sensory or mental capabilities, or lack of experience and knowledge, unless they have been given supervision or instruction concerning use of the appliance by a person responsible for their safety.
- ⊗ Children should be supervised to ensure that they do not play with the appliance.
- ⊗ Ensure that the fan is switched off from the supply mains before removing the guard.
- ⊗ This appliance contains batteries that are non-replaceable.
- ⊗ WARNING: For the purposes of recharging the battery, only use the detachable supply unit <BLJ24W120200P-V> provided with this appliance.

Safety Instructions

- ⦿ Under normal use of condition, this equipment should be kept a separation distance of at least 20 cm between the antenna and the body of the user.
- ⦿ This appliance contains built-in li-ion battery. Do not disassemble, impact, crush the battery or throw it into fire. If there is severe swelling, do not continue to use. Do not leave the battery in high temperature environment.
- ⦿ Do not use this fan if the power cord of the charging base is damaged or its power plug is loose.
- ⦿ Do not operate any fan with a damaged cord or plug. Discard fan or return to an authorized service facility for examination and/or repair.
- ⦿ Do not use this fan in a place where it will easily fall over or where there are other unstable objects nearby.
- ⦿ Do not excessively pinch, bend, or twist the power cord of the charging base as this may expose or break its core.
- ⦿ Do not insert your fingers or any object into the front grille, rear grille, or the fan blades when the fan is in use.
- ⦿ Keep hair and fabrics away from the fan to avoid getting them caught in the fan.

Safety Instructions

- ⦿ Do not use any improper power outlet.
- ⦿ Do not use the charging base provided with this fan for any other device.
- ⦿ Do not improperly dispose of old batteries. Used batteries should be discarded at a professional recycling facility.
- ⦿ Do not charge the fan on uneven places or plush materials. Otherwise, it is easy to cause circuit failure or fire due to poor contact between the charging base and the charging port.
- ⦿ Prior to cleaning or other maintenance, the appliance must be disconnected from the supply mains.

Safety Instructions

PRECAUTIONS

Installation

- ⚠ To avoid electric shocks, fire, personal injury, or other damage, make sure the fan base is installed last. Please follow the installation instructions in the user manual.
- ⚠ Do not turn on the fan or connect it to the charging base if it is not completely assembled.
- ⚠ Turn off or unplug the fan before installing or disassembling it. Do not touch the on/off button to prevent the fan from running and causing danger.

Transportation

- ⚠ Firmly hold the fan stand to avoid it from falling down and causing personal injury.

Using the Fan

- ⚠ Immediately stop using the fan if it makes unusual sounds, gives off bad odors, overheats, or rotates irregularly.
- ⚠ Do not lean on or tilt the fan while it is running.
- ⚠ Do not shake the fan's head repeatedly so as to avoid damage to the internal mechanism.

Charging the Fan

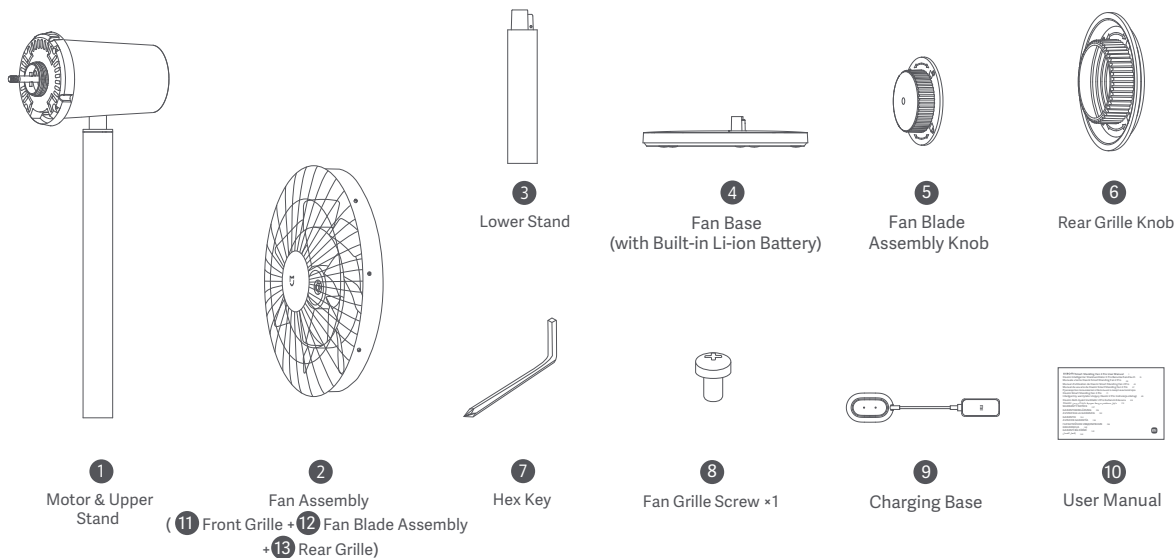
- ⚠ When the battery is depleted, the fan should be charged as soon as possible. To prevent the battery from being damaged, connect the charging base to the fan base in a timely manner.
- ⚠ Do not unplug the charging base by directly pulling at the cord or wiggling it out of the outlet. Instead, pull the plug out itself.
- ⚠ Do not attempt to repair the charging base by yourself if it is damaged.
- ⚠ When the charging base is damaged or broken, it must be replaced with a genuine one purchased from the manufacturer or after-sales service department.
- ⚠ When the fan is charging, the fan base may get warm. It is recommended to charge the fan on insulating materials or in places that are not easily affected by heat sources, so as to prevent the places where the fan is put from becoming discolored or deformed.

Care & Maintenance

- ⚠ Make sure the fan is unplugged before removing the protective cover.
- ⚠ When maintaining and cleaning the fan, make sure to remove the fan base first before removing other parts and to install the fan base last when installing.

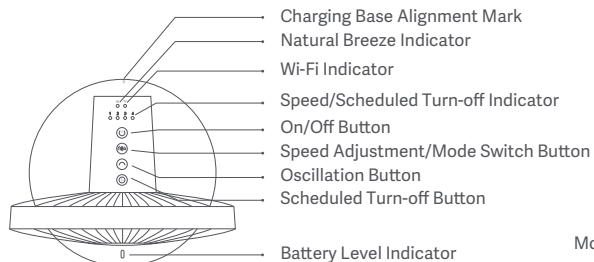
Package Contents

Read this manual carefully before use, and retain it for future reference.

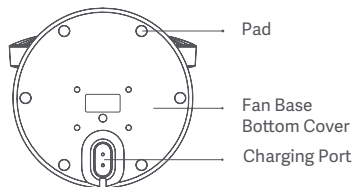


Note: Illustrations of the product, accessories, and user interface in the user manual are for reference purposes only. The actual product and functions may vary due to product enhancements.

Product Overview



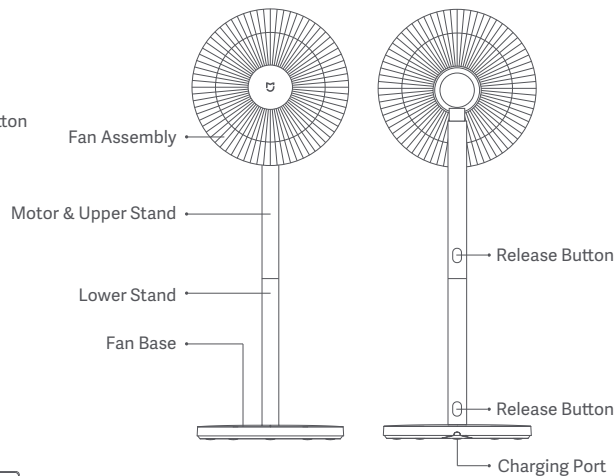
Top View



Bottom View



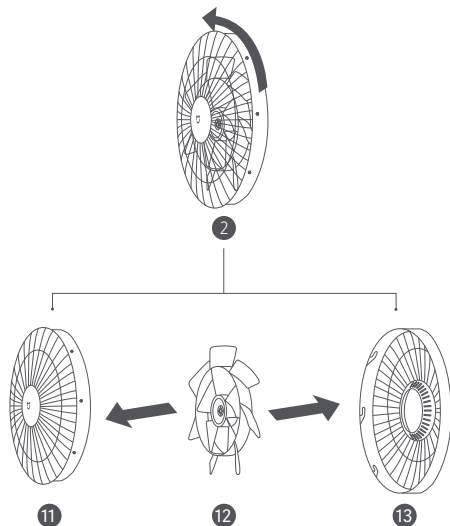
Charging Base



Installation

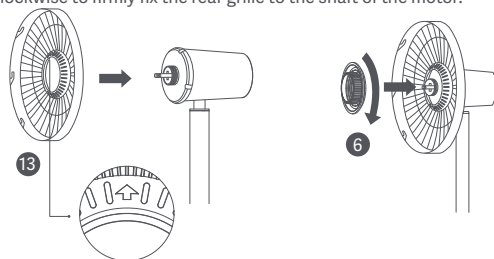
Step 1: Open the fan assembly

Turn the **11** front grille counterclockwise until it separates from the **13** rear grille. Remove the front and rear grille, then take out the **12** fan blade assembly.



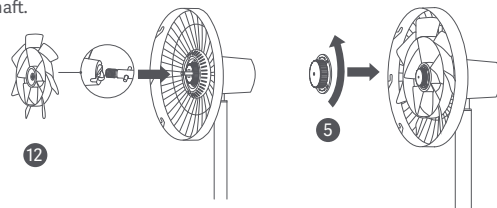
Step 2: Install the rear grille

Install the **13** rear grille onto the motor with "↑" facing upwards, and then install and turn the **6** rear grille knob clockwise to firmly fix the rear grille to the shaft of the motor.



Step 3: Install the fan blade assembly

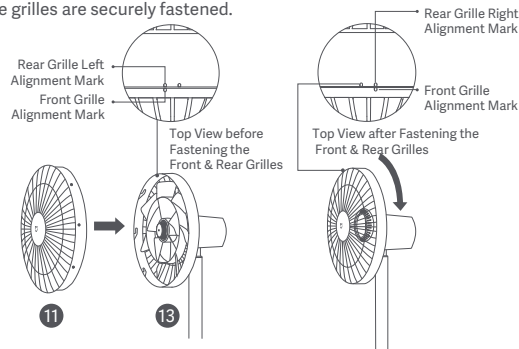
Align the center hole of the **12** fan blade assembly with the motor's shaft to install it into position, then install the **5** fan blade assembly knob onto the motor's shaft. Turn the knob counterclockwise to fix the fan blade assembly to the motor's shaft.



Installation

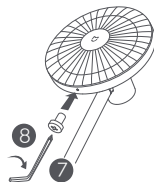
Step 4: Install the front grille

Align the front grille alignment mark with the rear grille left alignment mark, and make sure the ⑪ front grille is properly embedded into the ⑬ rear grille. Turn the front grille clockwise until the front grille alignment mark aligns the rear grille right alignment mark. Make sure the grilles are securely fastened.

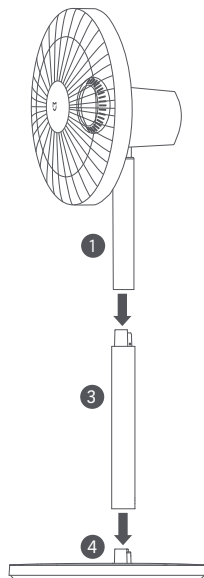


Step 5: Fasten the front grille

Insert the ⑧ fan grille screw into the hole at the bottom of the fan grille. Turn the screw clockwise with the included ⑦ hex key to tighten it.



Step 6: Install the fan base



Standing fan mode: Connect ① motor & upper stand to the ③ lower stand, and then connect lower stand to the ④ fan base, as illustrated. Once you hear a click, the parts have been installed successfully.

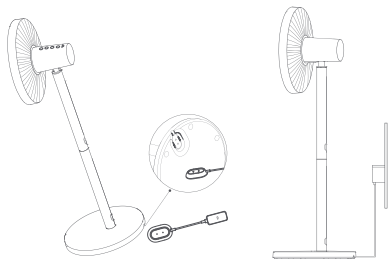
Table fan mode: Connect ① motor & upper stand to the ④ fan base. Once you hear a click, the parts have been installed successfully.

Note: Press the release button to remove the lower stand.

How to Use

Charging

- It is recommended to fully charge the fan before use.
- Connect the charging base to the charging port on the bottom of the fan base, and then plug in the charging base.
- When the battery level indicator is blinking, the fan is successfully connected to the power.
- You can use this fan by either connecting to a power outlet or not. The fan is equipped with a built-in Wi-Fi module, and energy consumption occurs even when it is turned off. By fully charging the fan and then turning it off, the battery can last for approximately 2 days. To maintain optimal battery performance, it is recommended to keep charging the fan if it is not in use.



Note: Always charge and use the fan in a flat, stable place.

- Connecting to the power outlet


Fan Status	Battery Level	Battery Level Indicator Status
On/Off	≤30%	Blinking orange
	30%–100%	Blinking white
	100%	Off

- Not connecting to the power outlet

Fan Status	Battery Level	Battery Level Indicator Status
On	30%–100%	White
	1%–30%	Orange
	0%	Off (The fan will automatically turn off)
Off	0%–100%	Off

Turning On/Off

Turning On


Press the button  to start the fan. When turned on for the first time, the default speed is slow (1) and the mode is direct breeze.

Turning Off

Press the button  to stop the fan while it is running.

Switching Speed/Mode

Switching Speed


Press the button  to adjust the speed, and the corresponding indicators will light up (see table below). After the fan is turned off and turned back on again, the speed will be the last used one.

Speed	Slow (1)	Medium (2)	Fast (3)	Turbo (4)
Indicator	★●●●	★★●●	★★★●	★★★★


Note: ★ means the indicator is on; ● means the indicator is off.

How to Use

Switching Mode


Press and hold the button  to switch between direct breeze and natural breeze. The indicator is off while in direct breeze mode and is on while in natural breeze mode. After the fan is turned off and turned back on again, the mode will be the last used one.

Enable/Disable Oscillation

Press the button  to enable or disable oscillation. You can set the oscillation angle range in the app. After the fan is turned off and turned back on again, the oscillation setting will be the last used one.

Note: When the Wi-Fi connection is reset, the oscillation angle range will change to the default angle of 90°. Unplug then plug the fan in or reset the Wi-Fi connection then turn on the fan, the fan will automatically oscillate its angle if enabling the oscillation function. The oscillation time varies depending on different angles, please wait with patience.

Scheduled Turn-off

Press the button  to cycle through the scheduled turn-off times: 1 hour, 2 hours, 3 hours, 4 hours, and disabled, and the corresponding indicator(s) will light up (see table below). Five seconds after using the scheduled turn-off function, the indicator(s) resume to indicate the corresponding status of the current speed.

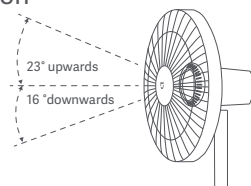
Scheduled	Disabled	1 hour	2 hours	3 hours	4 hours
Indicator	● ● ● ●	★ ● ● ●	★ ★ ● ●	★ ★ ★ ●	★ ★ ★ ★

Note: ★ means the indicator is on; ● means the indicator is off.

For more scheduled turn-off options (up to 8 hours), please go to the Mi Home/Xiaomi Home app.

Adjust the Airflow Direction

Gently lift or push down the fan's head or fan grille to adjust the airflow upwards or downwards.



Connecting with Mi Home/Xiaomi Home App

This product works with Mi Home/Xiaomi Home app*. Control your device with Mi Home/Xiaomi Home app.

Scan the QR code to download and install the app. You will be directed to the connection setup page if the app is installed already. Or search "Mi Home/Xiaomi Home" in the app store to download and install it. Open Mi Home/Xiaomi Home app, tap "+" on the upper right, and then follow prompts to add your device.

* The app is referred to as Xiaomi Home app in Europe (except for Russia). The name of the app displayed on your device should be taken as the default.





12E361AF

Note: The version of the app might have been updated, please follow the instructions based on the current app version.



Connecting to Wi-Fi



Simultaneously press and hold the buttons  and . Once you hear a long beep, the fan is awaiting a connection, then you can pair it with a device via the app.

How to Use

Wi-Fi Status & Indicator Description



Wi-Fi Status	Awaiting Connection	Connecting	Connected	Fail to Connect
Indicator	Blinking orange	Blinking blue	Blue	Orange

Resetting Wi-Fi Connection



Simultaneously press and hold the buttons  and . Once you hear a long beep, the Wi-Fi connection has been reset successfully and then the fan is awaiting a connection. The Wi-Fi connection needs to be reset on the circumstances listed below:

- The Xiaomi account that the fan is paired with has been changed.
- The router that the fan is connected to has been changed.
- The account or password of the router that the fan is connected to has been changed.
- The Mi Home/Xiaomi Home app is unable to control the fan.

Enabling/Disabling Wi-Fi

Simultaneously press and hold the buttons  and  for seven seconds until you hear a notification sound, and then the Wi-Fi is enabled or disabled.

Child Lock Function

To disable the function of child lock, go to the page of Mi Smart Standing Fan 2 Pro in the Mi Home/Xiaomi Home app, or simultaneously press and hold the buttons  and  until you hear a long beep.

Note: Resetting the Wi-Fi connection or unplugging and plugging in the fan again can also disable this function.

Care & Maintenance

Washable Parts

The parts listed below can be cleaned with a soft cloth or sponge using water or neutral detergent.



11

Front Grille



12

Fan Blade Assembly



13

Rear Grille



6

Rear Grille Knob

⚠ Note: Stop and unplug the fan, then disassemble it and clean its parts. After cleaning, make sure all parts are completely dry before installing them and using the fan again. Avoid direct sunlight.

Not Washable Parts

The parts listed below can be wiped clean with a soft, dry cloth.



5

Fan Blade Assembly Knob



4

Fan Base



9

Charging Base



3

Lower Stand



1

Motor & Upper Stand

⚠ Notes: Do not rinse the parts listed above with water.
Do not use thinner, gasoline, detergent or alkaline detergent to clean any parts.

Specifications

Name	xiaomi Smart Standing Fan 2 Pro	Rated Voltage	12 V ~
Model	BPLDS03DM	Rated Power	24 W
Type	Standing Fan	Noise Emission	≤58 dB(A)
Net Weight	Approx. 3.2 kg	Battery Type	Rechargeable Li-ion Battery
Item Dimensions	343 × 330 × 1000 mm	Battery Capacity	2800 mAh(33.6 Wh)
Charging Input	12 V ~ 2 A	Limited Charging Voltage	0.8 V ~
Wireless Connectivity	Wi-Fi IEEE 802.11 b/g/n 2.4 GHz		

*Radio Frequency and Radio Transmission Power

RF Specification	Operation Frequency	Maximum Output Power
2.4 G Wi-Fi	2412–2472 MHz	<20 dBm

Product Information Requirements	Test Data
Maximum Fan Flow Rate (F)	20.28 m³/min
Fan Power Input (P)	12.7 W
Service Value (SV)	1.60 (m³/min)/W
Maximum Air Velocity (c)	3.47 meters/sec
Measurement Standard for Service Value	EN IEC 60879:2019
Standby Power Consumption (PSB)	Without Wi-Fi connection: 0.216 W With Wi-Fi connection: 0.391 W
Fan Sound Power Level (LWA)	56.3 dB(A)
Contact Details	Zhejiang Xingyue Electric Equipment Co., Ltd. South Side, 24th Floor, Jinpin Building, Headquarters Center, Yongkang City, Zhejiang Province, China

Power Adapter

Information Published	Value and Precision	Unit
Manufacturer	Zhongshan Baolijin Electronic Co., Ltd.	-
Model Identifier	BLJ24W120200P-V	-
Input Voltage	100-240	V~
Input AC Frequency	50/60	Hz
Output Voltage	12.0	V---
Output Current	2.0	A
Output Power	24.0	W
Average Active Efficiency	89.09	%
Efficiency at Low Load(10%)	83.11	%
No-load Power Consumption	0.070	W

Troubleshooting

Fault	Possible Cause	Solution
The fan doesn't work.	The stand does not properly connect to the fan base.	Install the fan base with the stand correctly.
	Child lock is enabled.	Disable the child lock function.
	The battery is depleted.	Charge the fan with the charging base.
The fan is unable to connect to Wi-Fi.	The Wi-Fi connection is 5 GHz.	Connect to a 2.4 GHz Wi-Fi network.
	The fan has been offline for more than half an hour.	Reset the Wi-Fi connection.
Fan blades are stuck.	Fan blades are stuck by a foreign object.	Unplug the fan and remove the foreign object.
The battery level indicator does not light up.	The battery enters into sleep protection.	Connect the fan to the charging base to activate the battery.
The oscillation function does not work.	The fan is under the auto-oscillation state.	Wait for the auto-oscillation completes. It will last for 14 seconds at most.

WARRANTY NOTICE

THIS WARRANTY GIVES YOU SPECIFIC RIGHTS, AND YOU MAY HAVE OTHER RIGHTS CONVEYED BY LAWS OF YOUR COUNTRY, PROVINCE OR STATE. INDEED, IN SOME COUNTRIES, PROVINCES OR STATES, CONSUMER LAW MAY IMPOSE A MINIMUM WARRANTY PERIOD. OTHER THAN AS PERMITTED BY LAW, XIAOMI DOES NOT EXCLUDE, LIMIT OR SUSPEND OTHER RIGHTS YOU MAY HAVE. FOR A FULL UNDERSTANDING OF YOUR RIGHTS WE INVITE YOU TO CONSULT THE LAWS OF YOUR COUNTRY, PROVINCE OR STATE.

1. LIMITED PRODUCT WARRANTY

XIAOMI warrants that the Products are free from defects in materials and workmanship under normal use and use in accordance with the respective Product user manual, during the Warranty Period.

The duration and conditions related to the legal warranties are provided by respective local laws. For more information about the consumer warranty benefits, please refer to Xiaomi's official website <https://www.mi.com/en/service/warranty/>.

Xiaomi warrants to the original purchaser that its Xiaomi Product will be free from defects in materials and workmanship under normal use in the period mentioned above.

Xiaomi does not guarantee that the operation of the Product will be uninterrupted or error free.

Xiaomi is not liable for damages arising from non-compliance with the instructions related to the use of the Product.

2. REMEDIES

If a hardware defect is found and a valid claim is received by Xiaomi within the Warranty Period, Xiaomi will either (1) repair the product at no charge, (2) replace the product, or (3) refund the Product, excluding potential shipping costs.

3. HOW TO OBTAIN WARRANTY SERVICE

To obtain warranty service, you must deliver the Product, in its original packaging or similar packaging providing an equal degree of Product protection, to the address specified by Xiaomi. Except to the extent prohibited by applicable law, Xiaomi may require you to present proofs or proof of purchase and / or comply with registration requirements before receiving warranty service.

4. EXCLUSIONS AND LIMITATIONS

Unless otherwise stipulated by Xiaomi, this Limited Warranty applies only to the Product manufactured by or for Xiaomi and identifiable by the trademarks, trade name or "Xiaomi" or "Mi" logo.

The Limited Warranty does not apply to any (a) Damage due to acts of nature or God, for example, lightning strikes, tornadoes, flood, fire, earthquake or other external causes; (b) Negligence; (c) Commercial use; (d) Alterations or modifications to any part of the Product; (e) Damage caused by use with non-Xiaomi products; (f) Damage caused by accident, abuse or misuse; (g) Damage caused by operating the Product outside the permitted or intended uses described by Xiaomi or with improper voltage or power supply; or (h) Damage caused by service (including upgrades and expansions) performed by anyone who is not a representative of Xiaomi.

It is your responsibility to backup any data, software, or other materials you may have stored or preserved on the product. It is likely that the data, software or other materials in the equipment will be lost or reformatted during the service process, Xiaomi is not responsible for such damage or loss.

No Xiaomi reseller, agent, or employee is authorized to make any modification, extension, or addition to this Limited Warranty. If any term is held to be illegal or unenforceable, the legality or enforceability of the remaining terms shall not be affected or impaired.

Except as prohibited by laws or otherwise promised by Xiaomi, the after-sales services shall be limited to the country or region of the original purchase.

Products which were not duly imported and/or were not duly manufactured by Xiaomi and/or were not duly acquired from Xiaomi or a Xiaomi's official seller are not covered by the present warranties. As per applicable law you may benefit from warranties from the non-official retailer who sold the product.

Therefore, Xiaomi invites you to contact the retailer from whom you purchased the product.

The present warranties do not apply in Hong Kong and Taiwan.

5. IMPLIED WARRANTIES

Except to the extent prohibited by applicable law, all implied warranties (including warranties of merchantability and fitness for a particular purpose) will have a limited duration up to a maximum duration of this limited warranty. Some jurisdictions do not allow limitations on the duration of an implied warranty, so the above limitation will not be applied in these cases.

6. DAMAGE LIMITATION

Except to the extent prohibited by applicable law, Xiaomi shall not be liable for any damages caused by accidents, indirect, special or consequential damages, including but not limited to loss of profits, revenue or data, damages resulting from any breach of express or implied warranty or condition, or under any other legal theory, even if Xiaomi has been informed of the possibility of such damages. Some jurisdictions do not allow the exclusion or limitation of special, indirect, or consequential damages, so the above limitation or exclusion may not apply to you.

7. XIAOMI CONTACTS

For customers, please visit the website: <https://www.mi.com/en/service/warranty/>

The contact person for the after-sale service may be any person in Xiaomi's authorized service network, Xiaomi's authorized distributors or the final vendor who sold the products to you. If in doubt please contact the relevant person as Xiaomi may identify.

Environmental Notice

The built-in rechargeable li-ion battery of this fan contains chemicals that may pollute the environment. Before disposing of this fan, remove the battery and then discard it at a professional recycling facility.

Steps of Removing the Battery

Warning: The fan will no longer be usable once the battery is removed. The following steps should only be completed upon the permanent disposal of the fan. Do not dismantle the fan on your own for routine maintenance.

1. Turn off the fan and remove the fan base.
2. Take the pads out from the fan base and unscrew the bottom cover of the fan base to remove it.
3. Press the cable connector clip that connects to the battery, and pull out the cable. Then unscrew the battery to remove it.

⚠ Note: If you accidentally touch the substances leaked from the battery, wash the affected area with a large amount of water and seek medical attention immediately.

Regulatory Compliance Information

Europe—EU declaration of conformity



Hereby, Zhejiang Xingyue Electric Equipment Co., Ltd. declares that the radio equipment type BPLDS03DM is in compliance with Directive 2014/53/EU. The full text of the EU declaration of conformity is available at the following internet address:
<http://www.mi.com/global/service/support/declaration.html>

Disposal and recycling information



All products bearing this symbol are waste electrical and electronic equipment (WEEE as in directive 2012/19/EU) which should not be mixed with unsorted household waste. Instead, you should protect human health and the environment by handing over your waste equipment to a designated collection point for the recycling of waste electrical and electronic equipment, appointed by the government or local authorities. Correct disposal and recycling will help prevent potential negative consequences to the environment and human health. Please contact the installer or local authorities for more information about the location as well as terms and conditions of such collection points.

For detailed e-manual, please go to www.mi.com/global/service/userguide

Manufactured for: Xiaomi Communications Co., Ltd.

Manufactured by: Zhejiang Xingyue Electric Equipment Co., Ltd.

(a Mi Ecosystem company)

Address: South Side, 24th Floor, Jinpin Building, Headquarters Center,

Yongkang City, Zhejiang Province, China

For further information, please go to www.mi.com

Importer:

Beryko s.r.o.

Pod Vinicemi 931/2, 301 00 Plzeň

www.beryko.cz

V1.0